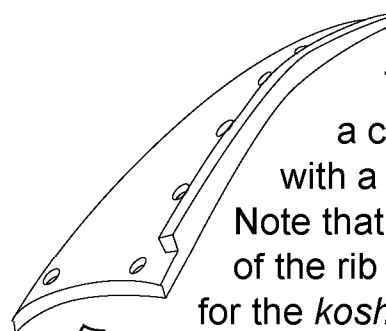
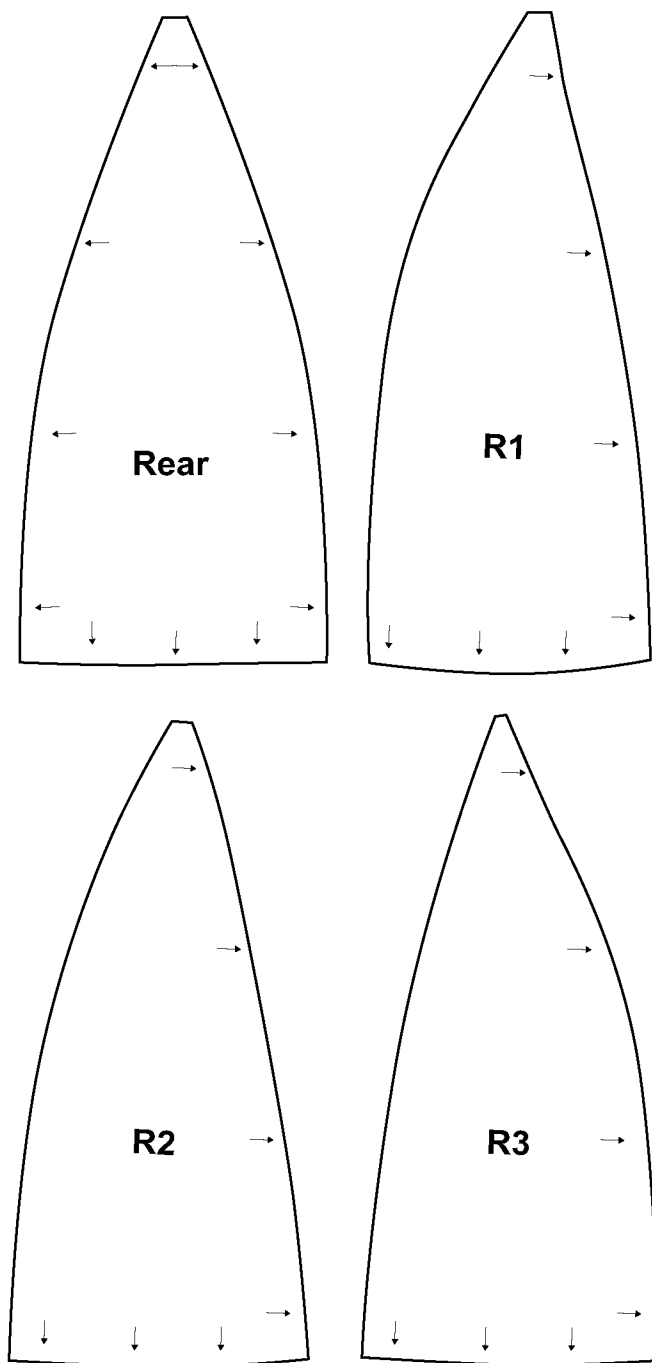


Pattern of plates for an 8-plate helmet bowl. (One-half actual size)

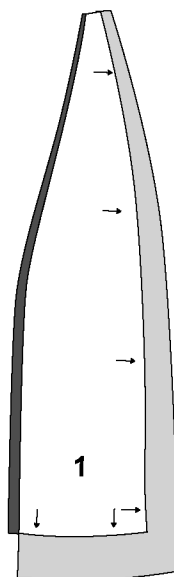
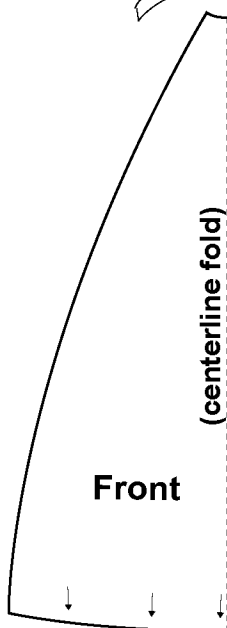
The arrows mark the sides that will need extra metal (c. 1/2") to underlap the next plate over and *koshimaki*.

If you are making a ribbed helmet bowl, the unmarked sides get the excess for ribs (c. 1/4")

Plates are numbered R (= Right side) from the back to the front.



This shows a curved plate with a built up rib. Note that the bottom of the rib is removed for the *koshimaki* to fit.



Underlap Rib

The illustration at right shows how the pattern shown above (in white) is supplemented with material you have to add (in gray) depending on your intended project.