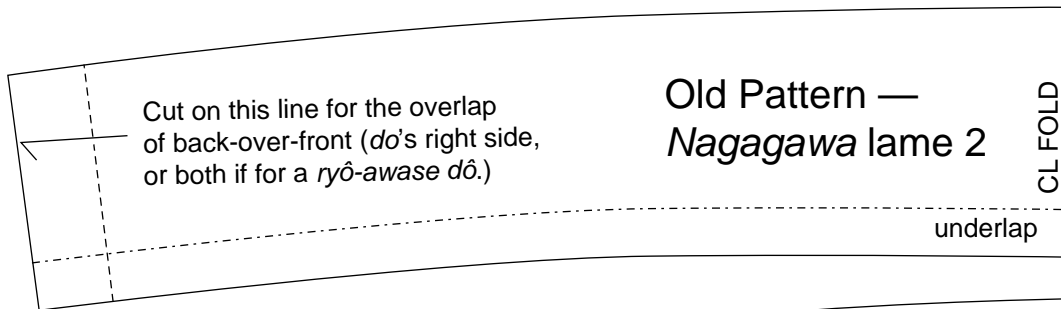
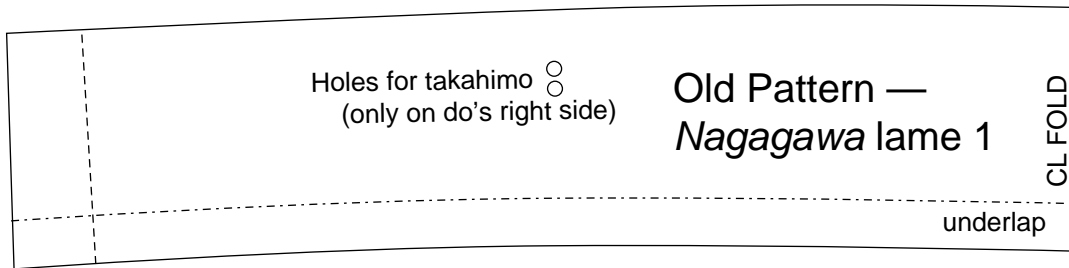


Pattern of front plates for an “old style” *Yokohagi dô*.*

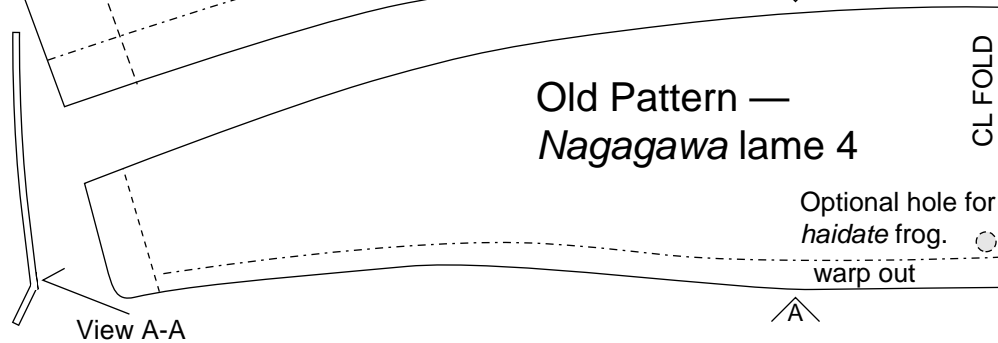
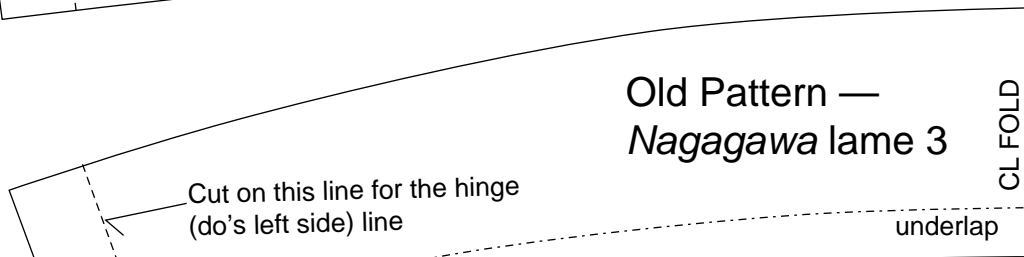
(One-half actual size)

*For *okegawa dô*, *maru dô*, *môgami dô*, and other cuirasses constructed of horizontal lames.

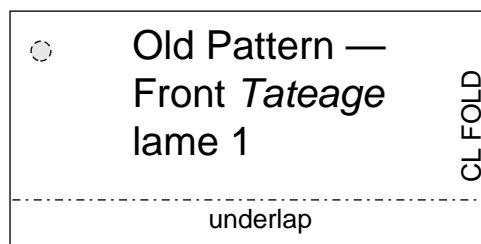


The vertical dotted lines on the body panels mark the width of the left side as you wear the *dô*. The bit beyond the dotted line is the overlap on your right side.

To make a *môgami-dô*, connect the patterns for the lames for front and back plates at your left side; then mark down from the front and rear *tateage* for your hinge lines, and cut the patterns on those lines.



View A-A



Although there are slight differences between the plates of the front *tateage*, you can simplify your pattern by just cutting rectangles to the appropriate measurements. There is no appreciable difference.